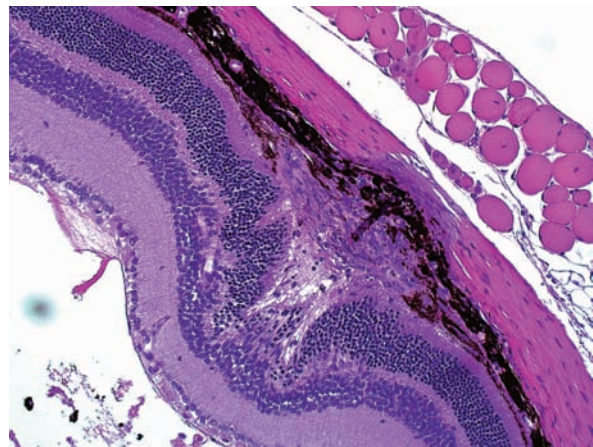
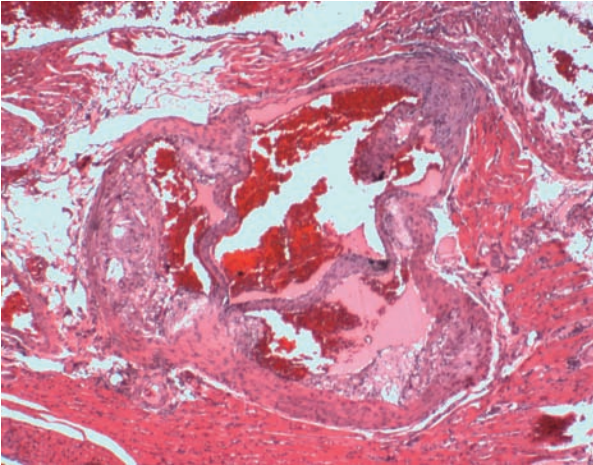


Selected Topics In

Histopathology

COMPARATIVE BIOSCIENCES, INC.



Carol Meschter, DVM, PhD, DACVP is a founder of Comparative Biosciences, Inc. She is an experienced board-certified veterinary pathologist with expertise in toxicology and animal models. She has over 100 publications and is a reviewer for several major journals.

Histopathology

CBI provides contract histology, immunohistochemistry, and pathology services to the biopharmaceutical industry. Whether preparing a single biopsy, a complex histomorphometry study or a complete carcinogenicity study, CBI offers high quality slide preparation, pathological evaluation, and reporting in a timely and cost effective manner. Histopathology is clearly one of the most important tools for assessment of drug efficacy and activity.

Histopathology at CBI

- Standard
- GLP Safety
- Complex Customized Projects
- Immunohistochemistry & Immunofluorescence
- Histomorphometry
- Special Organs & Models

Tissue cross reactivity in human and all animals species-GLP and Research-all tissues, tumors, disease tissues.



Histopathology at CBI

Click Here: Contact Us



CBI is proud to announce that we are AAALAC Accredited.



COMPARATIVE BIOSCIENCES, INC.

A TRANSLATIONAL APPROACH TO PRECLINICAL RESEARCH