



# COMPARATIVE BIOSCIENCES, INC.

A TRANSLATIONAL APPROACH TO PRECLINICAL RESEARCH

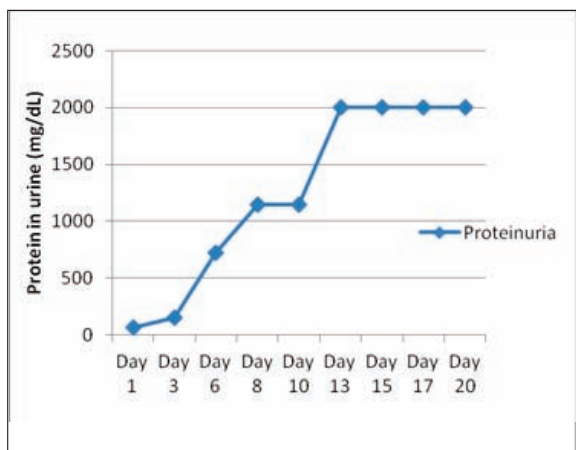


**Comparative Biosciences, Inc. is a Full Service Preclinical CRO offering expert assistance from early drug development all the way through regulatory submission.**

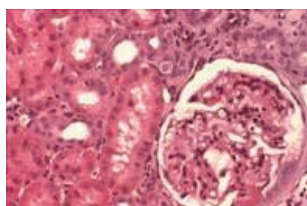
## Heymann Nephritis

Immune-mediated FX-1A-induced glomerular nephritis in rats is an excellent translational model of immune mediated membranous glomerular nephritis in humans. Administration of sheep antibody to rat proximal tubular epithelial cell brush border antigen (anti-Fx1A) induces a uniform and severe glomerular nephritis characterized by proteinuria and characteristic histologic changes in the kidney. At CBI, we have optimized and validated the model and we have a robust, uniform model that is suitable for assessment of disease mechanisms and test article activity.

**Contact us for more information and validation data.**



Heymann Nephritis



Urine protein excretion increases beginning about Day 8

Click Here:  
**Heymann Nephritis**

Click Here:  
**Contact Us**