



# COMPARATIVE BIOSCIENCES, INC.

A TRANSLATIONAL APPROACH TO PRECLINICAL RESEARCH



## Dermal OCT and Corneal Study

**CBI Dermal OCT Scanning is used in our biomedical research, pharmacology and toxicology, including GLP studies**

**Our system enables new research opportunities.**

Applications currently available include:

### OCULAR

Retinal layer abnormalities, cornea, anterior segment, diabetes, ocular implants, inflammation, tumors, xenografts, devices, CNV lesions, neovascularization

### SKIN MODELS

Qualitative and quantitative measurement of dermal and epidermal thicknesses, dermal fibrosis, bleomycin injury, skin implants, microneedles, xenografts

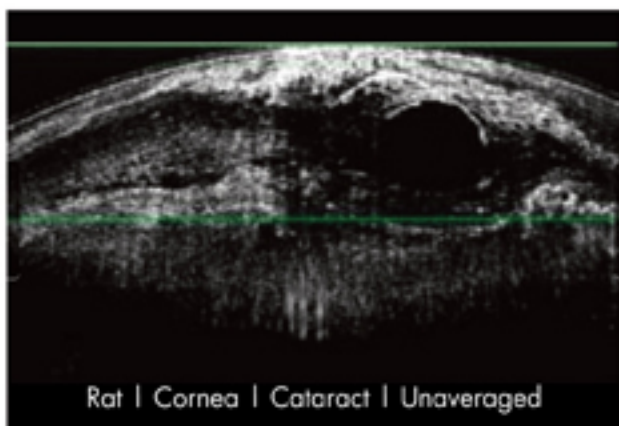
### XENOGRAFTS

Examination of xenografts and ocular tumors

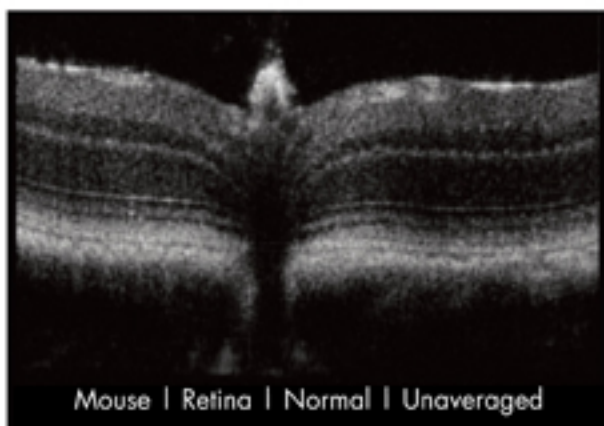
### RODENT EARS

### TISSUE ENGINEERING:

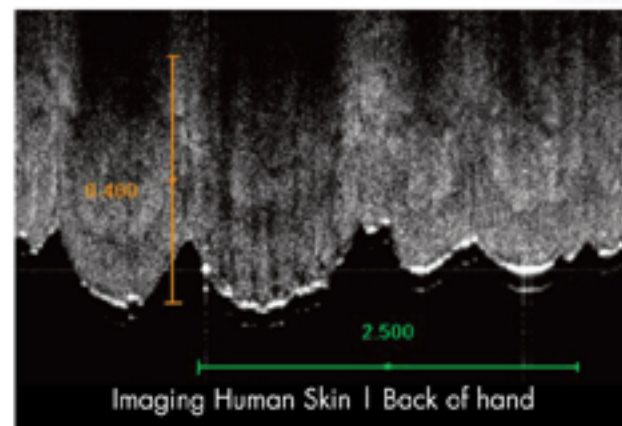
Imaging scaffolds



Rat | Cornea | Cataract | Unaveraged



Mouse | Retina | Normal | Unaveraged



Imaging Human Skin | Back of hand

**Contact us for more information and validation data.**

CLICK HERE:  
**OCT**

CLICK HERE:  
**Stem Cell Research**

CLICK HERE:  
**Antibacterial Research & Consulting**